

MONTHLY MEMBERSHIP PROGRESS REPORT

LOCATION INDIA

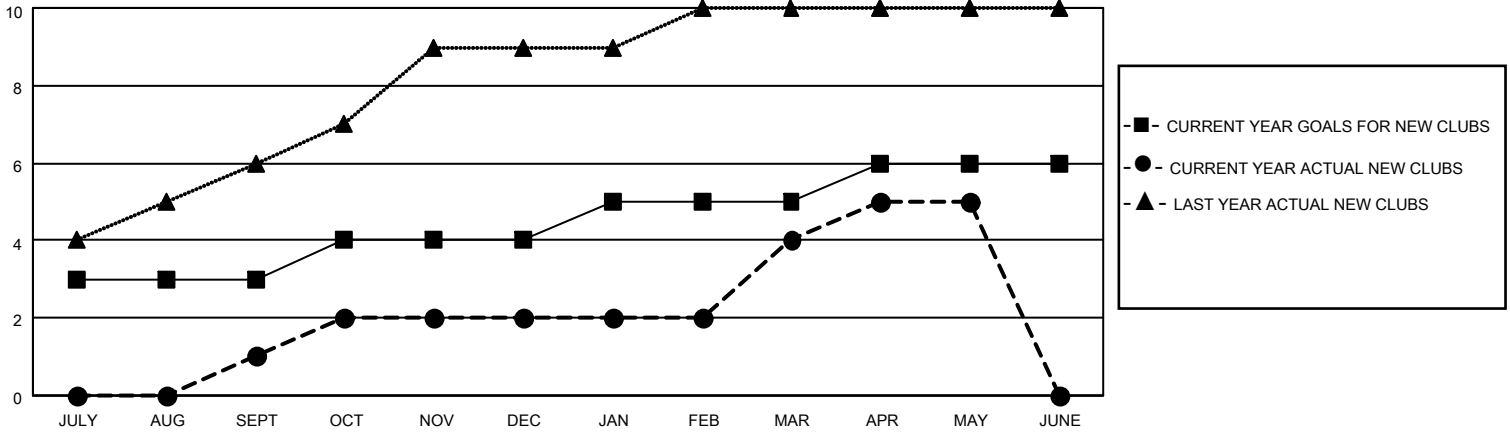
District 322 B2

Results as of: 5/31/2023

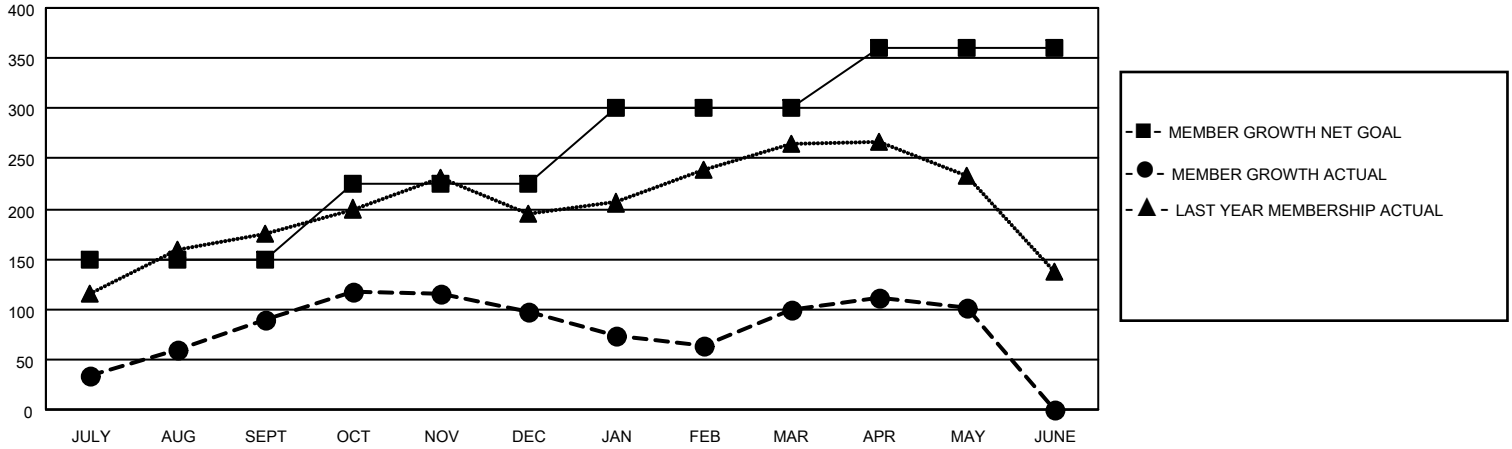
Clubs			
RESULTS FOR 2022-2023			
QUARTER	NEW CLUB GOAL	NEW CLUBS	DROPPED CLUBS
JULY/AUG/SEPT	3	1	0
OCT/NOV/DEC	1	1	6
JAN/FEB/MAR	1	2	3
APR/MAY/JUNE	1	1	0

Members			
RESULTS FOR 2022-2023			
QUARTER	MEMBER GROWTH NET GOAL	MEMBER GROWTH ACTUAL	DROPPED MEMBERS ACTUAL (including transfers)
JULY/AUG/SEPT	150	132	34
OCT/NOV/DEC	75	115	106
JAN/FEB/MAR	75	82	72
APR/MAY/JUNE	60	52	51

GOALS AND ACTUAL NEW CLUBS CUMULATIVE



GOALS AND ACTUAL MEMBERS CUMULATIVE



DROPPED CLUBS: 9

42 CLUBS OF 95 ADDED 1 OR MORE NEW MEMBERS

GENDER DISTRIBUTION

MALE	2,129 (69.99%)
FEMALE	913 (30.01%)
NON BINARY	0 (0.00%)
PREFER NOT TO ANSWER	0 (0.00%)

DROPPED MEMBERS

DECEASED	8
CLUB CANCELLED	121
OTHER	134
TOTAL	263

[CLICK HERE FOR CUMULATIVE MEMBERSHIP DATA](#)

TOTAL FAMILY UNIT MEMBERS 1,575

FAMILY MEMBERS PAYING HALF DUES 988